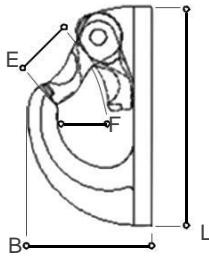




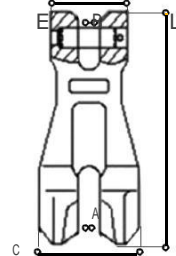
Grade 80 Toebehoren / Grade 80 Accessories

28. Aanlashaken /
Weld hooks29. Inkort klauwen /
Clevis chain clutches30. Wartel oogbouten /
Swivel lifting eyes

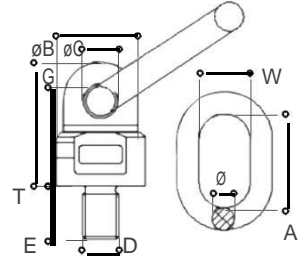
28



29



30



28		Aanlashaken / Weld hooks Afmetingen / Dimensions					
Item no.	WLL (ton)	B	E	F	L	Weight (kg)	
YE.8.081.01	1.00	53.00	18.00	18.00	87.00	0.35	
YE.8.081.02	2.00	63.50	26.00	26.00	112.00	0.55	
YE.8.081.03	3.00	75.00	30.00	30.00	127.50	0.87	
YE.8.081.05	5.00	92.50	35.00	35.00	160.00	1.75	
YE.8.081.08	8.00	106.00	40.00	40.00	180.00	2.98	
YE.8.081.12	12.00	140.00	5.00	49.00	236.00	6.16	

29		Inkort klauwen / Clevis chain clutches Afmetingen / Dimensions					
Item no.	WLL (ton)	A	B	C	E	L	Weight (kg)
YE.8.093.06	1.12	7.50	7.50	33.00	26.00	73.50	0.17
YE.8.093.08	2.00	9.50	9.50	45.00	36.00	101.00	0.41
YE.8.093.10	3.15	13.00	13.00	55.00	48.00	138.00	0.97
YE.8.093.13	5.30	18.00	16.00	75.00	59.00	177.00	2.01
YE.8.093.16	8.00	21.00	21.00	93.00	73.00	220.00	3.32
YE.8.093.20	12.50	22.00	22.00	99.00	78.00	258.00	6.20
YE.8.093.22	15.00	25.50	25.50	118.00	99.00	295.00	8.50

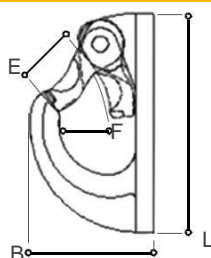
30		Wartel oogbouten / Swivel lifting eyes Afmetingen / Dimensions									
Item no.	WLL (90°)	WLL (0°)	DxE	B	C	G	T	A	W	Q	Weight (kg)
YE.8.032.08	0.30	0.60	m08x13	36.00	15.00	51.00	51.00	55.00	30.00	13.00	0.41
YE.8.032.10	0.45	0.90	m10x18	36.00	15.00	51.00	41.00	55.00	30.00	13.00	0.43
YE.8.032.12	0.50	1.00	m12x18	36.00	15.00	51.00	41.00	55.00	30.00	13.00	0.44
YE.8.032.14	1.12	2.00	m14x20	36.00	15.00	51.00	41.00	55.00	30.00	14.00	0.45
YE.8.032.16	1.12	2.00	m16x20	36.00	15.00	52.00	42.00	55.00	35.00	13.00	0.46
YE.8.032.20	2.00	4.00	m20x30	49.50	19.00	68.00	56.00	70.00	40.00	16.00	0.96
YE.8.032.24	3.15	6.30	m24x30	57.00	22.00	78.00	65.50	85.00	40.00	18.00	1.45
YE.8.032.27	3.15	6.30	m27x35	57.00	22.00	78.00	65.50	85.00	40.00	18.00	1.51
YE.8.032.30	5.30	10.60	m30x35	66.00	23.50	96.50	80.50	85.00	40.00	20.00	2.17
YE.8.032.30-2	8.00	11.80	m30x35	80.00	28.00	112.00	92.00	115.00	50.00	22.00	3.57
YE.8.032.36	8.00	11.80	m36x50	80.00	27.00	109.00	89.50	115.00	50.00	22.00	3.60
YE.8.032.39	8.00	11.80	m39x90	80.00	27.00	109.00	89.50	115.00	50.00	22.00	4.10
YE.8.032.42	10.00	15.00	m42x50	80.00	27.00	109.00	89.50	115.00	50.00	25.00	3.73
YE.8.032.48	10.00	15.00	m48x50	80.00	27.00	109.00	89.50	115.00	50.00	25.00	4.02



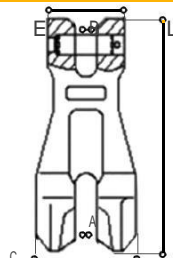
Grade 80 Accessoires / Grade 80 Zubehör

28. Crochets à souder /
Anschweißhaken29. Griffes de raccourcissement /
Gabelkopf Kettenklauen30. Boulons à oeil multi-
directionnels / Einschraubbare
Hebeösen mit Drehgelenk

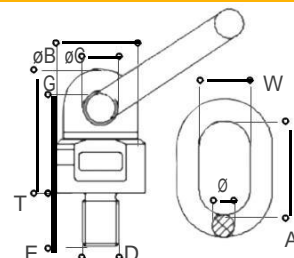
28



29



30



28

Crochets à souder / Anschweißhaken
Dimensions / Abmessungen (mm)

Item no.	WLL (ton)	B	E	F	L	Weight (kg)
YE.8.081.01	1.00	53.00	18.00	18.00	87.00	0.35
YE.8.081.02	2.00	63.50	26.00	26.00	112.00	0.55
YE.8.081.03	3.00	75.00	30.00	30.00	127.50	0.87
YE.8.081.05	5.00	92.50	35.00	35.00	160.00	1.75
YE.8.081.08	8.00	106.00	40.00	40.00	180.00	2.98
YE.8.081.12	12.00	140.00	5.00	49.00	236.00	6.16

29

Griffes de raccourcissement / Gabelkopf Kettenklauen
Dimensions / Abmessungen (mm)

Item no.	WLL (ton)	A	B	C	E	L	Weight (kg)
YE.8.093.06	1.12	7.50	7.50	33.00	26.00	73.50	0.17
YE.8.093.08	2.00	9.50	9.50	45.00	36.00	101.00	0.41
YE.8.093.10	3.15	13.00	13.00	55.00	48.00	138.00	0.97
YE.8.093.13	5.30	18.00	16.00	75.00	59.00	177.00	2.01
YE.8.093.16	8.00	21.00	21.00	93.00	73.00	220.00	3.32
YE.8.093.20	12.50	22.00	22.00	99.00	78.00	258.00	6.20
YE.8.093.22	15.00	25.50	25.50	118.00	99.00	295.00	8.50

30

Boulons à oeil multidirectionnels / Einschraubbare Hebeösen mit Drehgelenk
Dimensions / Abmessungen (mm)

Item no.	WLL (90°)	WLL (0°)	DxE	B	C	G	T	A	W	Q	Weight (kg)
YE.8.032.08	0.30	0.60	m08x13	36.00	15.00	51.00	51.00	55.00	30.00	13.00	0.41
YE.8.032.10	0.45	0.90	m10x18	36.00	15.00	51.00	41.00	55.00	30.00	13.00	0.43
YE.8.032.12	0.50	1.00	m12x18	36.00	15.00	51.00	41.00	55.00	30.00	13.00	0.44
YE.8.032.14	1.12	2.00	m14x20	36.00	15.00	51.00	41.00	55.00	30.00	14.00	0.45
YE.8.032.16	1.12	2.00	m16x20	36.00	15.00	52.00	42.00	55.00	35.00	13.00	0.46
YE.8.032.20	2.00	4.00	m20x30	49.50	19.00	68.00	56.00	70.00	40.00	16.00	0.96
YE.8.032.24	3.15	6.30	m24x30	57.00	22.00	78.00	65.50	85.00	40.00	18.00	1.45
YE.8.032.27	3.15	6.30	m27x35	57.00	22.00	78.00	65.50	85.00	40.00	18.00	1.51
YE.8.032.30	5.30	10.60	m30x35	66.00	23.50	96.50	80.50	85.00	40.00	20.00	2.17
YE.8.032.30-2	8.00	11.80	m30x35	80.00	28.00	112.00	92.00	115.00	50.00	22.00	3.57
YE.8.032.36	8.00	11.80	m36x50	80.00	27.00	109.00	89.50	115.00	50.00	22.00	3.60
YE.8.032.39	8.00	11.80	m39x90	80.00	27.00	109.00	89.50	115.00	50.00	22.00	4.10
YE.8.032.42	10.00	15.00	m42x50	80.00	27.00	109.00	89.50	115.00	50.00	25.00	3.73
YE.8.032.48	10.00	15.00	m48x50	80.00	27.00	109.00	89.50	115.00	50.00	25.00	4.02